

8

7

6

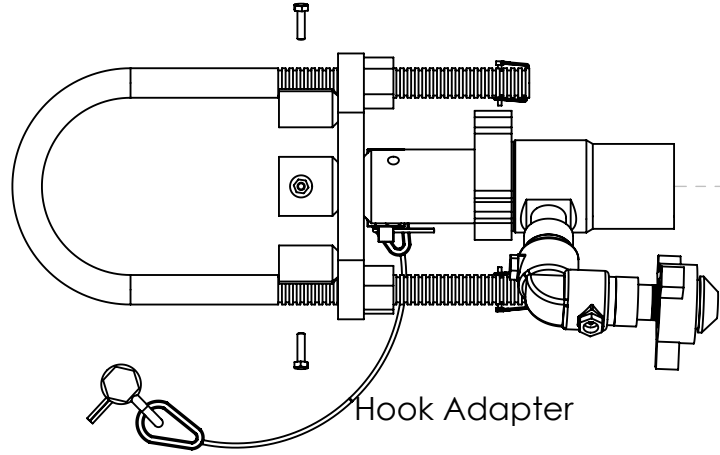
5

4

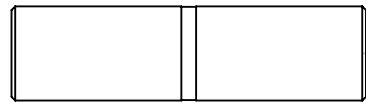
3

2

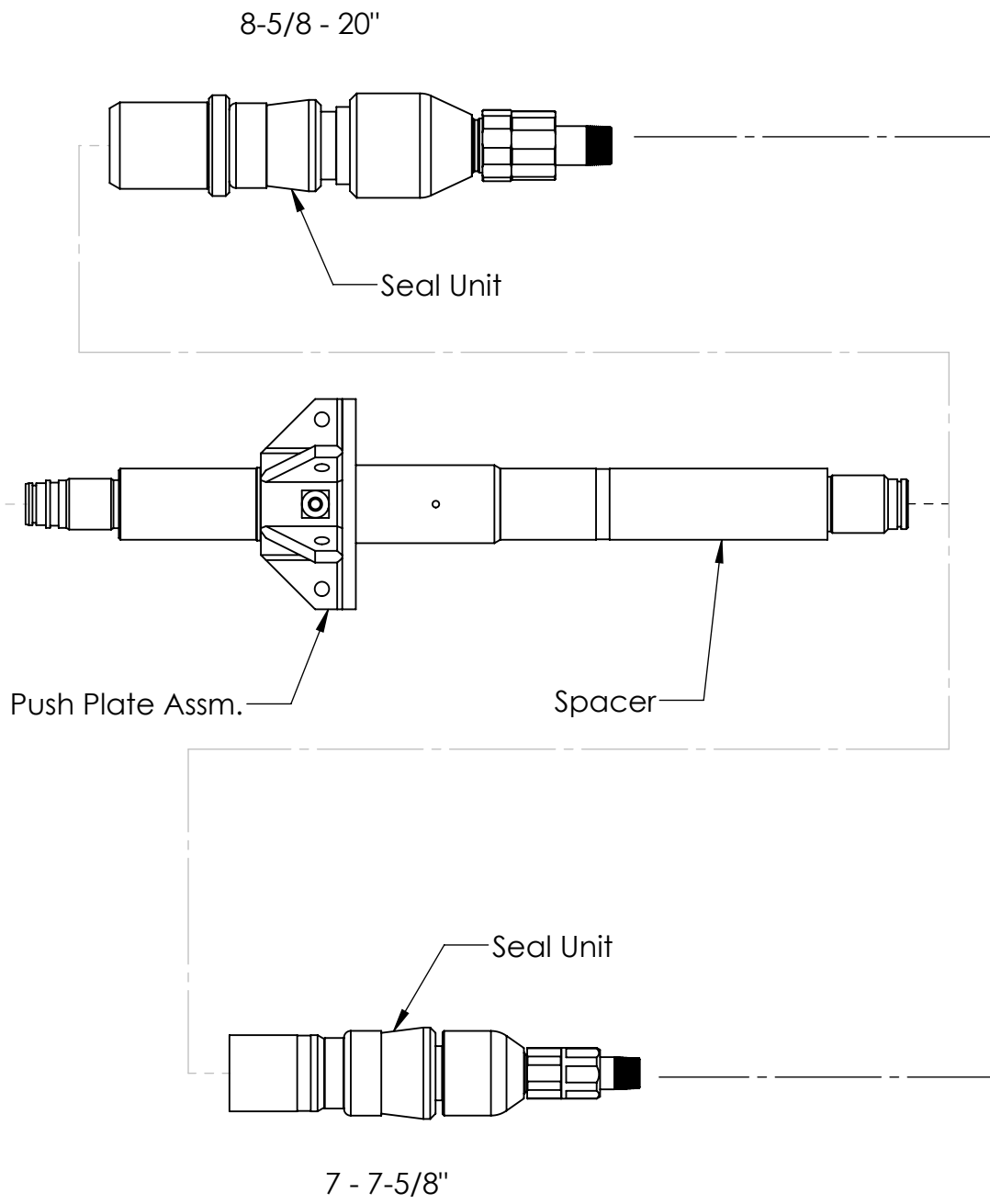
1



Hook Adapter



Top Drive X-Over



8-5/8 - 20"

Seal Unit

Push Plate Assm.

Spacer

Seal Unit

7 - 7-5/8"

7-20" CF Series Valve

Flex Hose

DATE	REV.	DESCRIPTION	BY	CHK	APP.

CRITICAL COMPONENT:
 UNLESS OTHERWISE SPECIFIED
 DO NOT SCALE FOR DIMENSIONS. ALL DIMENSIONS ARE IN INCHES.
 REMOVE ALL BURRS. RADIUS ALL CORNERS .025/.047. BREAK ALL UNNECESSARY SHARP EDGES .005/.020 X 45° OR .005/.020 R.
 DECIMAL TOLERANCES SURFACE FINISH CONCENTRICITY
 MACHINED SURFACES
 .X = ±.032 FRACTION ± 1/32 MACHINED 250RMS OD - ID .010 TIR
 .XX = ±.015 ANGULAR ± 0.50° STRAIGHT THDS. 175RMS ID - ID .010 TIR
 .XXX = ±.005 PERPEND. ± 0.25° TAPERED THDS. 125RMS OD - ID .015 TIR
 AS R./MACH. .025 TIR

© 2006 BY DRAWWORKS, L.P. ; BOLING DEVELOPMENT GENERAL PARTNER
 THIS DOCUMENT IS CONFIDENTIAL AND IS THE PROPERTY OF DRAWWORKS, L.P. (DW) IT MAY NOT BE COPIED OR REPRODUCED IN WHOLE OR IN PART IN ANY WAY WITHOUT THE EXPRESS WRITTEN CONSENT OF DW. THIS DOCUMENT ALSO IS AN UNPUBLISHED WORK OF DW. DW OWNS ALL RIGHTS TO THIS WORK AND INTENDS TO MAINTAIN THIS WORK CONFIDENTIAL AND AS A TRADE SECRET. DW MAY ALSO SEEK TO PROTECT THIS WORK AS AN UNPUBLISHED COPYRIGHT. THOSE HAVING ACCESS TO THE WORK MAY NOT COPY, USE, OR DISCLOSE THE INFORMATION IN THIS WORK UNLESS EXPRESSLY AUTHORIZED BY DW TO DO SO.

MATERIAL

PROCESS SPECS.



TITLE		
Top Drive Complete Autofill tool 7-20 inch		
DFT SCALE 1:24	DWN. CS	DATE 05/18/09
PROD. NO.	CHK.	DATE
P/N	APPD.	DATE
DWG. NO.	SHEET 1 of 1	
SUPERSEDES		REV.
NEXT ASSY		
CAD FILE CF-Valve Top Drive Complete Autofill Tool 7-20 in.		